
Our Impact

Since 1969, Heluna Health has been empowering population health researchers, government agencies, nonprofits, and public-private consortia to improve the health and well-being of communities across the U.S. and beyond. Our direct service programs have also impacted the lives of millions of people through our past 50+ years of service. We're proud of the work we do with our employees, clients, and partners, and the collective impact we make on health outcomes every day.

Our skill and innovation in direct service programming and partner support services:



Empower more than 500 health projects each year.



Impact more than 30 regions domestically and internationally.

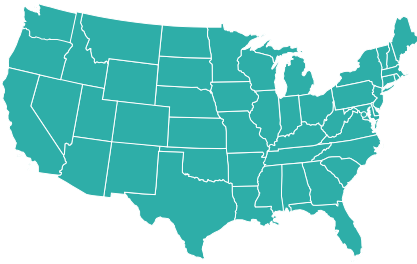


Are supported by more than 1,200 Heluna Health employees.



Touch neighborhoods where 60 million individuals live, work, and play.





Heluna Health and its clients work in 32 U.S. metropolitan areas in 22 states (including D.C.) across an array of population health topic areas.

5%

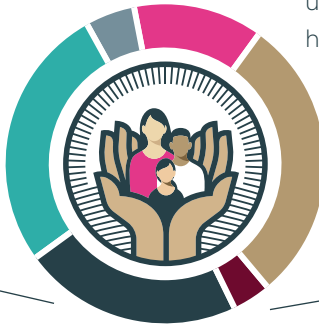
of clients work in nutrition.

27%

of clients work in other areas of need.

22%

of clients work in communicable disease.



13%

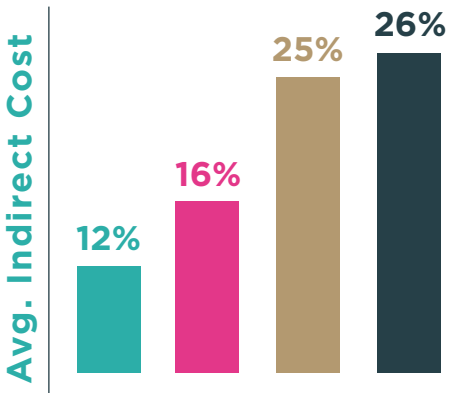
of clients work in substance use, violence prevention, or homeless support services.

29%

of clients work in community health.

4%

of clients work in family and children's health.



On average, Heluna Health's clients save up to 54% on facilities and administrative costs by deploying our services.

- Heluna Health
- Other Health and Community Fiscal Sponsors*
- Sample of Major Universities**
- California County Rates***

*n=7, based on most recent rates available from health-focused fiscal sponsor organizations via fiscalsponsordirectory.org. | **n=36 public and private institutions. | ***n=57, as reported to California Department of Public Health (CDPH) by counties, where publicly available.



We successfully renew over 95% of the grants we manage for our clients.

Contact us today to partner on your health initiative.

HELLO@HELUNAHEALTH.ORG | 800.201.7320

WWW.HELUNAHEALTH.ORG

in f t @HELUNAHEALTH